



COLORADO

# *PBC Metrics Workshop*

Workshop 4, October 6



**COLORADO**

**Department of Public Safety**

# Agenda

## Today's Objectives:

- Discuss how the PACE fits into PBC
- Share Feedback & Ideas for PBC
- Prepare for Next Workshop (Payment Models on October 20)

Description	Time Allotted
Agenda & Introductions <i>Please Enter your Name &amp; Organization in our Chat</i>	10
Summary of Themes from First 3 Workshops	15
Original PBC Plan: Weights of Performance Areas	5
Activity: Should Areas of Performance be Weighted?	20
Original PBC Plan: Review of Performance Categories	10
Activity: Defining Performance	35
Statewide vs. Program Level Baseline for Performance Measurement	10
Feedback: Idea to Combine Statewide and Program Level Metrics	10
Next Steps	5

# *Our Shared Vision*

## *What is our objective?*

*PBC is an innovative, transparent & fiscally responsible strategy ensuring local, safe & accountable providers deliver services & support to community corrections clients.*

## *Why?*

*The criminal justice system and communities benefit from researched, rehabilitative sentencing options. Local boards and providers serve the diverse clientele with additional OCC support, training and technical assistance resulting in lower recidivism rates.*

## *How will we get there?*

*This program offers the opportunity to listen and collaborate with community correction stakeholders, apply established research and provide clear, concise guidance to increase the quality and quantity of help & supportive programs to our communities.*

# Group Agreements



We recommend these ground rules to promote effective collaboration to reach agreement in a diverse group:

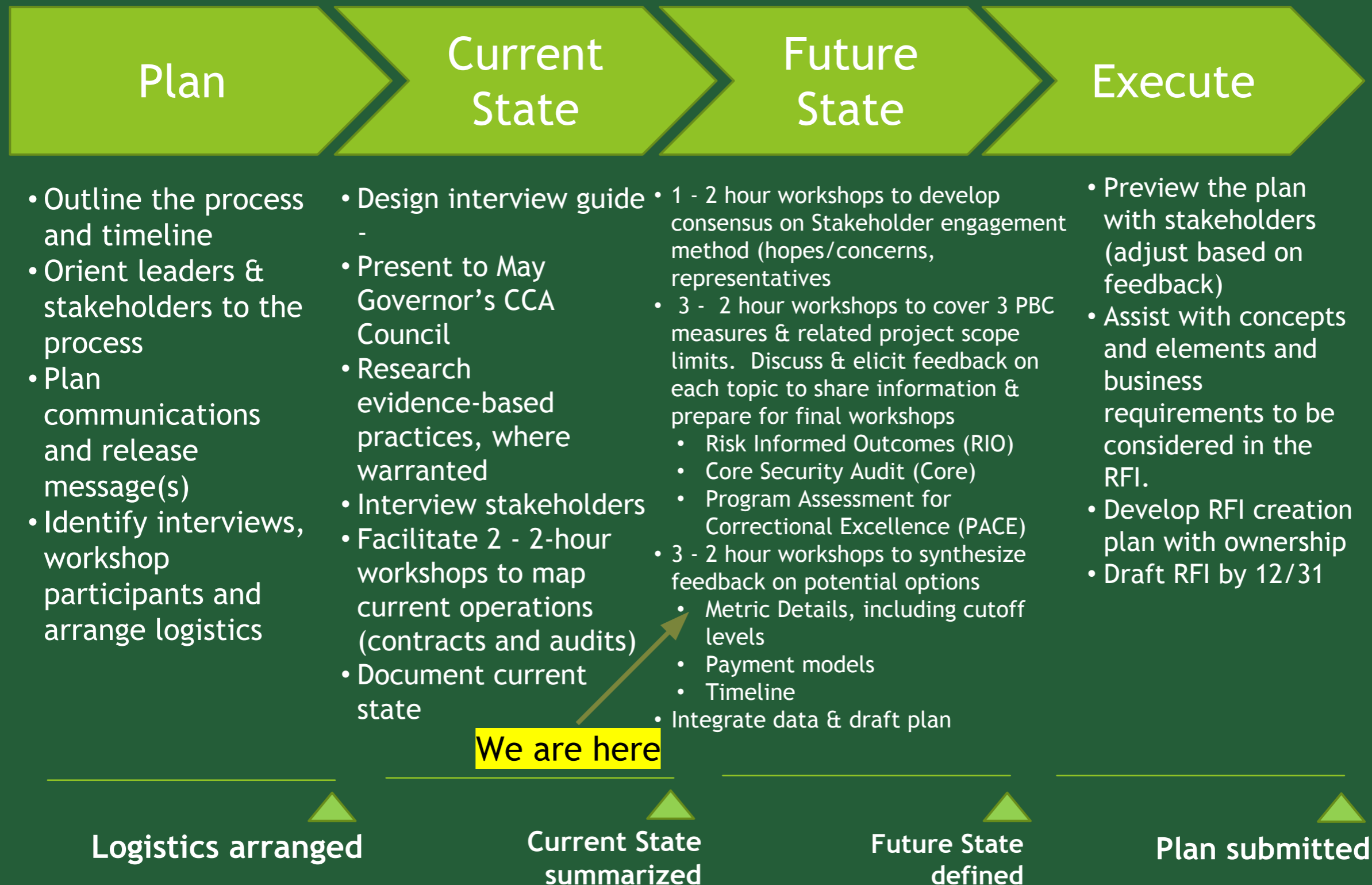
- One person speaks at a time
- Stay on mute unless engaging
- Say what you mean, ask questions to promote understanding
- Tough on problems, easy on people
- Use the past only to describe a better future

# Group Agreements Cont.



- Come prepared - review materials in advance, gather & share input from your community, stakeholders, colleagues etc.
- Collaborate - listen, learn and contribute patiently (be a part of the answer, not the answer)
- Focus - stay focused on our scope related to PBC and not conflate other challenges we face in CC
- Public Policy Perspective - favor durable, data-supported evidence & logic, over individual stories, anecdotes, or emotional appeals.
- Constructive orientation - assume positive intent of other stakeholders

# Project Roadmap



# The 2015 PBC Plan

1) Compliance with core security functions,

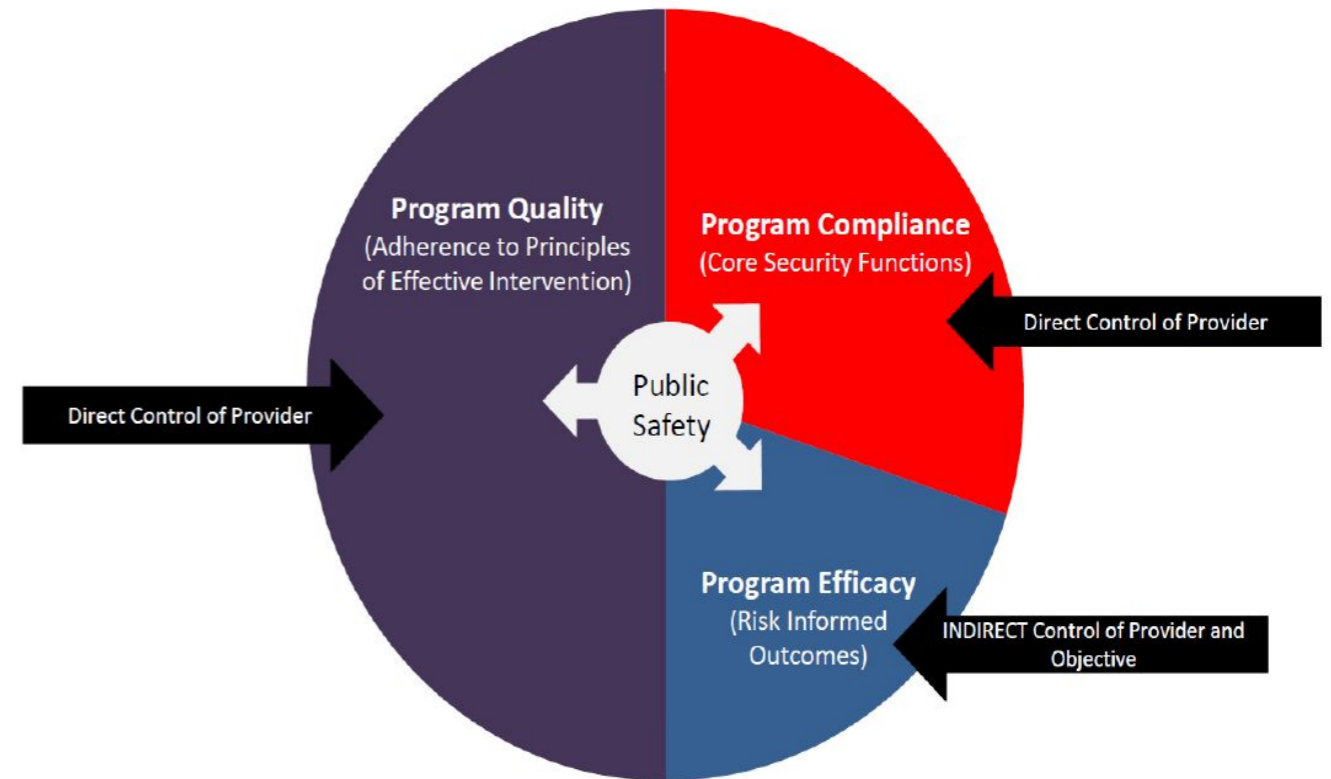
→ *Approximately 25%*

2) Adherence to the Principles of Effective Intervention (program quality), and

→ *Approximately 50%*

3) Program efficacy using risk-informed outcomes.

→ *Less than 25%*



# *Activity:*

## Should Areas of Performance Be Weighted?

When thinking about the 3 areas that define performance, should some have a higher influence than others in PBC?

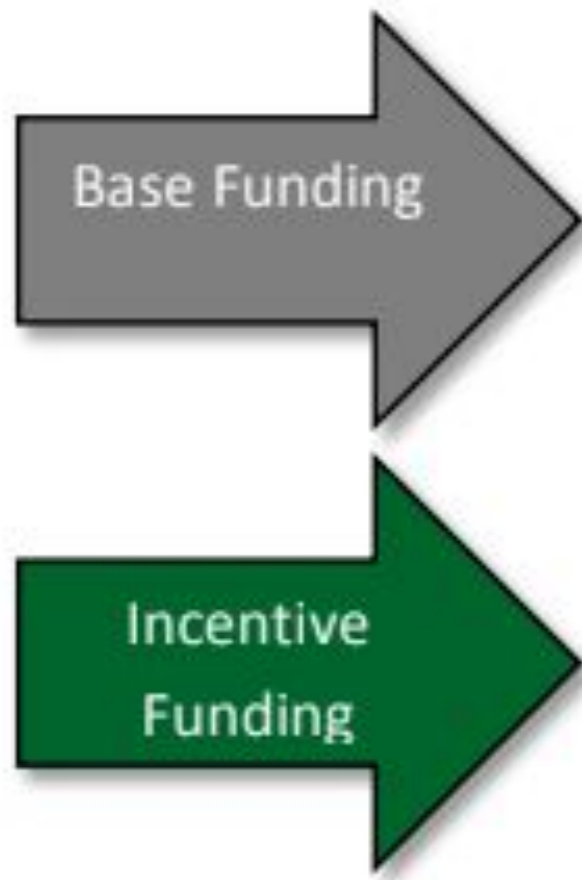
Let's go to our NoteApp Board to share and discuss:

<https://noteapp.com/OocvgzPvNM>



# The 2015 PBC Plan

## Categories of Performance Noted in Original Plan



Type	General Category
Type 1	<b>1 Year Probationary Status</b> AND/OR Imminent Risk of Contract Termination
Type 2	<b>2 Year Probationary Status</b> Possibility of Contract Termination and Frequent Monitoring
Type 3	<b>Minimally Acceptable Program</b> Targeted for Immediate Improvement and Frequent Monitoring
Type 4	<b>Generally Acceptable Program</b> Opportunity for Long Term Advancement
Type 5	<b>Strong Program</b> Preferred for High Risk/High Need or Specialized Offenders
Type 6	<b>Superior Program</b> Priority for High Risk/High Need or Specialized Offenders

# *Activity:*

## Defining Performance

How would you define underperforming, acceptable performance, and incentivized performance? Some questions to consider:

- When should a program be placed on probation or some kind of notice for underperforming?
- Is there a minimum level of expectation, despite baseline?
- How much above acceptable deserves an incentive?

# *Statewide vs. Program Level*

Urban Institute Report states decision needs to be made about statewide baseline targets or individual program's improvement

Concerns about Individual Program Improvement:

- Does not effectively capture statewide goals, including minimum expectations of performance
- Incentivizes poorer performance with more room for improvement
- Does not allow for much room for improvement of high performers

# *Statewide vs. Program Level*

Guardrail: PBC must include baseline measures of averages across state programs (statewide)

**Could PBC include both Statewide and Program level targets?**

# *An Idea:*

For Core and PACE Measures:

Composite Score - Statewide Baseline Measurement Targets

AND

1-3 Specific Measures - Individual Program Improvement



COLORADO

# *Next Steps*



**COLORADO**

**Department of Public Safety**